

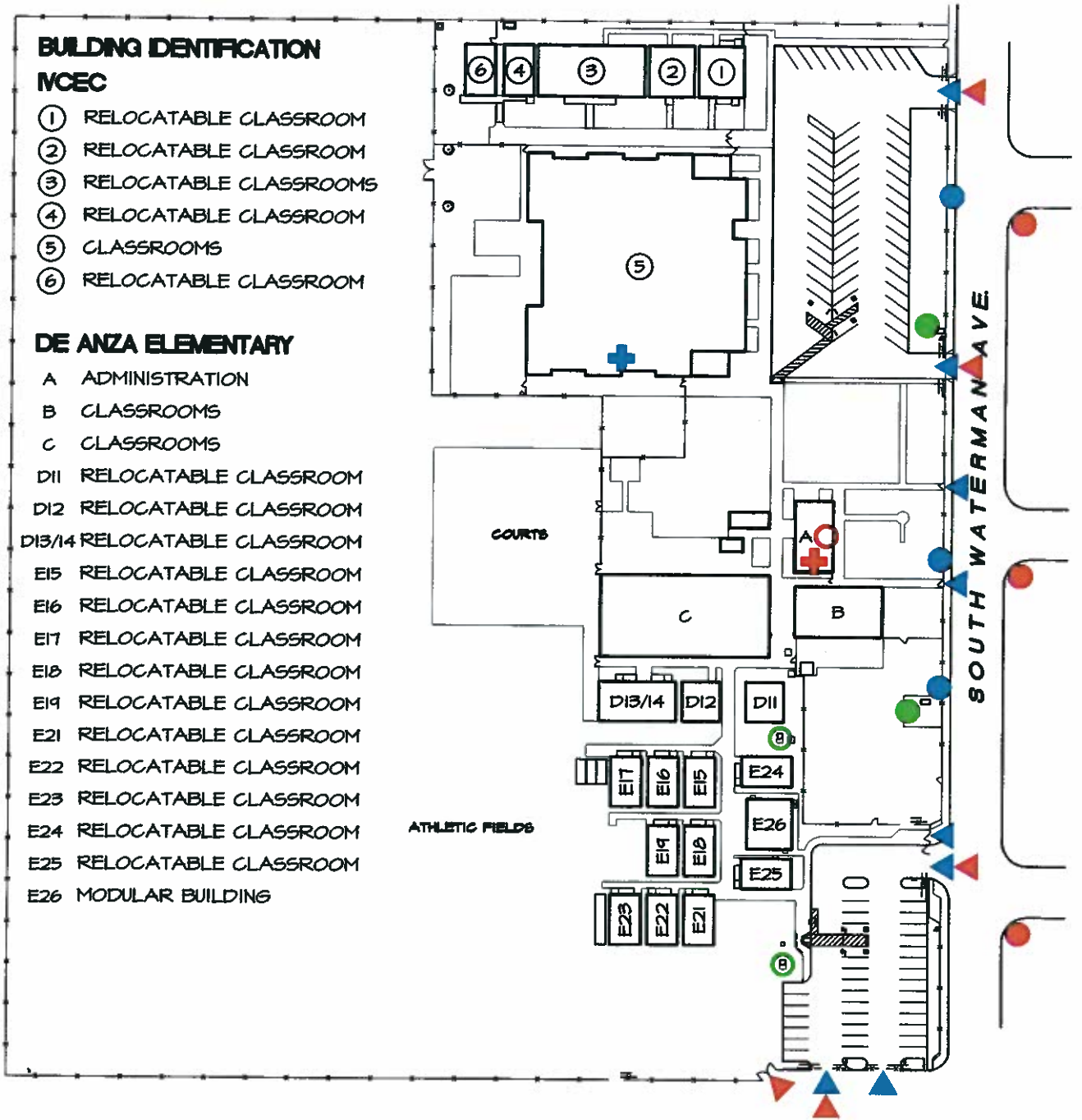
**BUILDING IDENTIFICATION**

**MCEC**

- ① RELOCATABLE CLASSROOM
- ② RELOCATABLE CLASSROOM
- ③ RELOCATABLE CLASSROOMS
- ④ RELOCATABLE CLASSROOM
- ⑤ CLASSROOMS
- ⑥ RELOCATABLE CLASSROOM

**DE ANZA ELEMENTARY**

- A ADMINISTRATION
- B CLASSROOMS
- C CLASSROOMS
- D11 RELOCATABLE CLASSROOM
- D12 RELOCATABLE CLASSROOM
- D13/14 RELOCATABLE CLASSROOM
- E15 RELOCATABLE CLASSROOM
- E16 RELOCATABLE CLASSROOM
- E17 RELOCATABLE CLASSROOM
- E18 RELOCATABLE CLASSROOM
- E19 RELOCATABLE CLASSROOM
- E21 RELOCATABLE CLASSROOM
- E22 RELOCATABLE CLASSROOM
- E23 RELOCATABLE CLASSROOM
- E24 RELOCATABLE CLASSROOM
- E25 RELOCATABLE CLASSROOM
- E26 MODULAR BUILDING



**LEGEND**

- GAS SHUT-OFF
- WATER SHUT-OFF
- ELECTRICAL MAIN SHUT-OFF
- ELECTRICAL SHUT-OFF
- FIRE HYDRANT
- ▲ PUBLIC ACCESS GATE
- ▲ FIRE ACCESS GATE
- ✚ FIRST AID KIT LOCATION
- ✚ EMERGENCY DRINKING WATER LOCATION
- EMERGENCY CONTAINER (BARREL) LOCATION



School  
**DE ANZA  
 ELEMENTARY SCHOOL**

**1530 SOUTH WATERMAN AVENUE  
 EL CENTRO, CA. 92243  
 TELEPHONE - 352-9811**

Scale  
 1" = 125'

Date  
 03-11-09

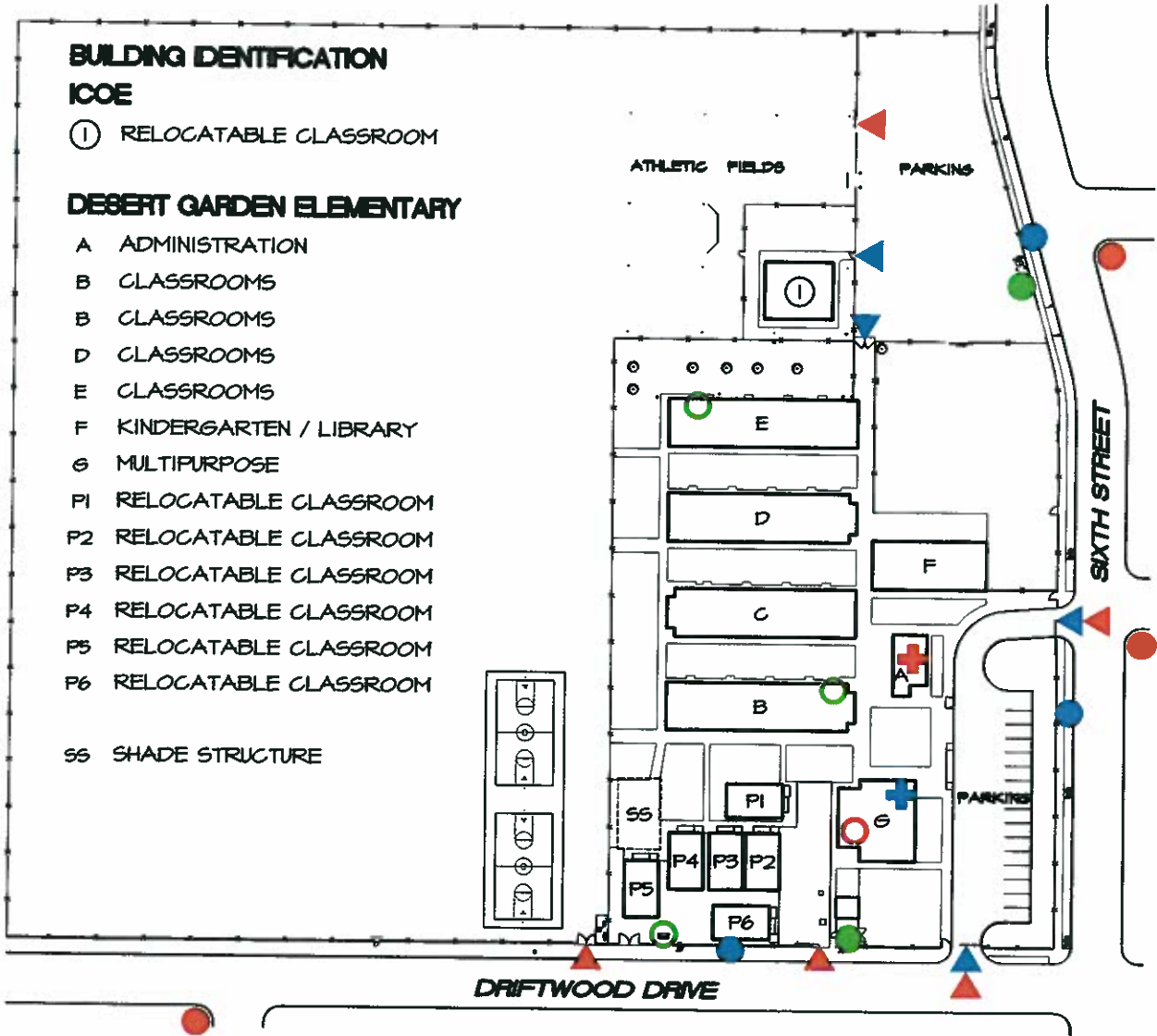
**BUILDING IDENTIFICATION**

**ICOE**

- ① RELOCATABLE CLASSROOM

**DESERT GARDEN ELEMENTARY**

- A ADMINISTRATION
- B CLASSROOMS
- B CLASSROOMS
- D CLASSROOMS
- E CLASSROOMS
- F KINDERGARTEN / LIBRARY
- G MULTIPURPOSE
- P1 RELOCATABLE CLASSROOM
- P2 RELOCATABLE CLASSROOM
- P3 RELOCATABLE CLASSROOM
- P4 RELOCATABLE CLASSROOM
- P5 RELOCATABLE CLASSROOM
- P6 RELOCATABLE CLASSROOM
- SS SHADE STRUCTURE



**LEGEND**

- GAS SHUT-OFF
- WATER SHUT-OFF
- ELECTRICAL MAIN SHUT-OFF
- ELECTRICAL SHUT-OFF
- FIRE HYDRANT
- ▲ PUBLIC ACCESS GATE
- ▲ FIRE ACCESS GATE
- ✚ FIRST AID KIT LOCATION
- ✚ EMERGENCY DRINKING WATER LOCATION
- EMERGENCY CONTAINER (BARREL) LOCATION

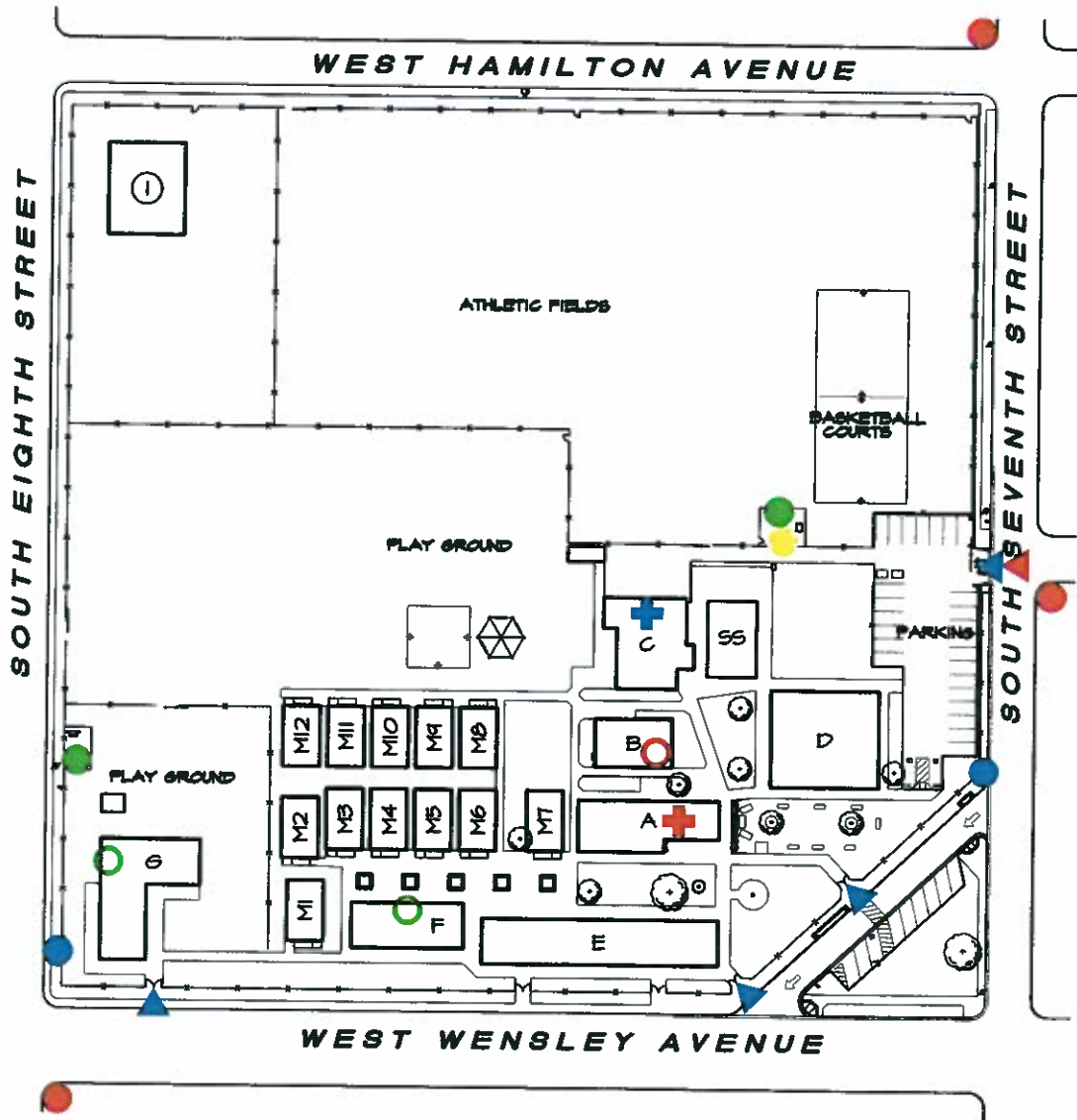


School  
**DESERT GARDEN  
 ELEMENTARY SCHOOL**

**1900 SOUTH SIXTH STREET  
 EL CENTRO, CA. 92243  
 TELEPHONE - 352-2051**

Scale  
 1" = 125'

Date  
 03-11-09



**BUILDING IDENTIFICATION  
HARDING ELEMENTARY**

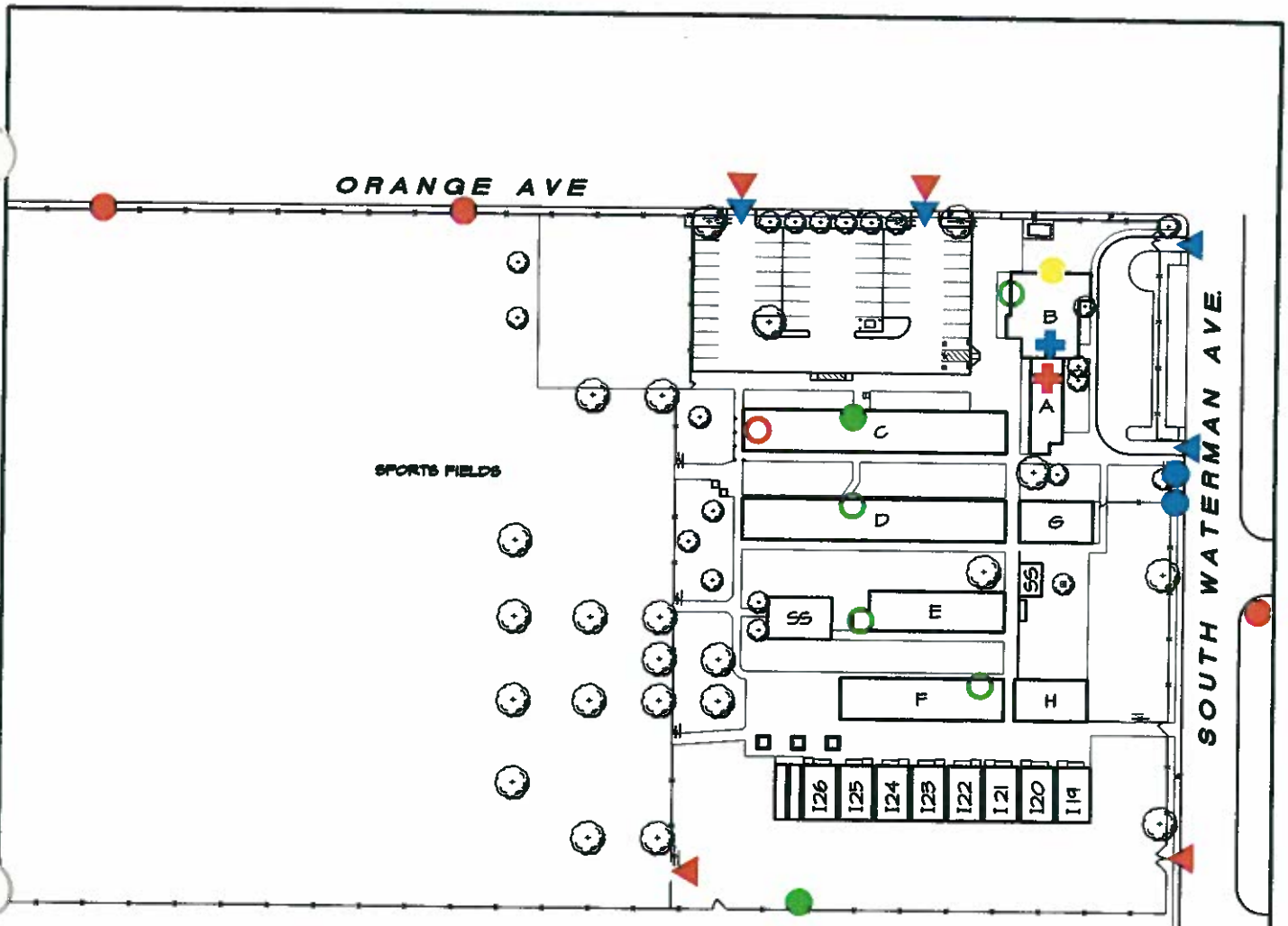
- |                            |                           |                    |
|----------------------------|---------------------------|--------------------|
| A ADMINISTRATION / LIBRARY | F CLASSROOMS              | SS SHADE STRUCTURE |
| B TEACHERS LOUNGE          | G CLASSROOMS              |                    |
| C MULTIPURPOSE             | H KINDERGARTEN            | <b>ICOE</b>        |
| D MAINTENANCE BUILDING     | MI RELOCATABLE CLASSROOM  | ① HEAD START       |
| E CLASSROOMS               | > THROUGH                 |                    |
|                            | M12 RELOCATABLE CLASSROOM |                    |

**LEGEND**

- |                            |   |
|----------------------------|---|
| ● GAS SHUT-OFF             | ▲ PUBLIC ACCESS GATE                    |
| ● WATER SHUT-OFF           | ▲ FIRE ACCESS GATE                      |
| ● ELECTRICAL MAIN SHUT-OFF | ⊕ FIRST AID KIT LOCATION                |
| ○ ELECTRICAL SHUT-OFF      | ⊕ EMERGENCY DRINKING WATER LOCATION     |
| ● FIRE HYDRANT             | ○ EMERGENCY CONTAINER (BARREL) LOCATION |



School <b>HARDING ELEMENTARY SCHOOL</b>	<b>950 SOUTH SEVENTH STREET EL CENTRO, CA. 92243 TELEPHONE - 352-4791</b>	Scale <b>1"=125'</b>	Date <b>03-11-09</b>
--	---	-------------------------	-------------------------



**BUILDING IDENTIFICATION  
HEDRICK ELEMENTARY SCHOOL**

- |                  |                           |                    |
|------------------|---------------------------|--------------------|
| A ADMINISTRATION | F CLASSROOMS              | SS SHADE STRUCTURE |
| B MULTIPURPOSE   | G KINDERGARTEN            |                    |
| C CLASSROOMS     | H KINDERGARTEN            |                    |
| D CLASSROOMS     | 119 RELOCATABLE CLASSROOM |                    |
| E CLASSROOMS     | > THROUGH                 |                    |
|                  | 126 RELOCATABLE CLASSROOM |                    |

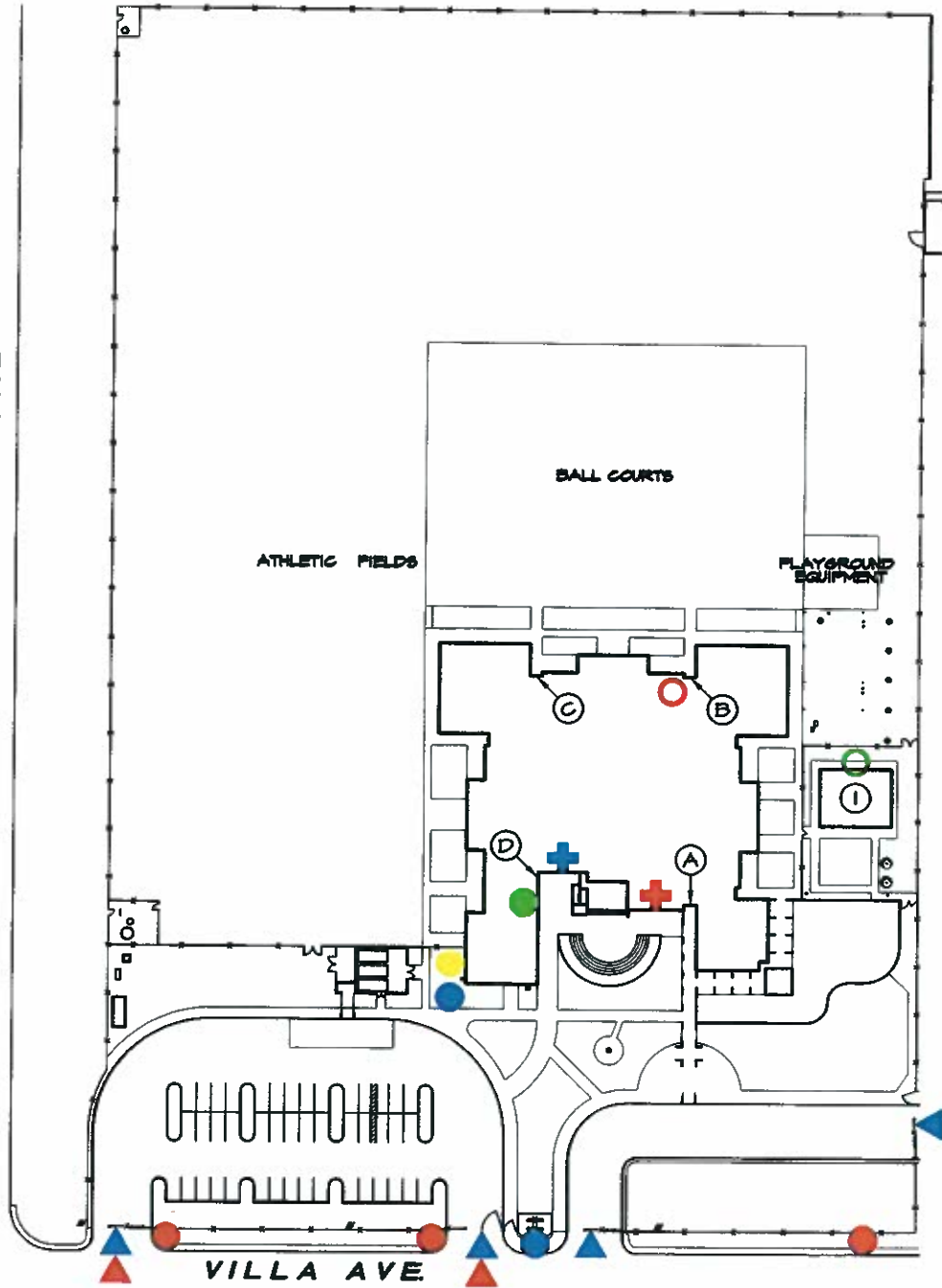
**LEGEND**

- |                            |   |
|----------------------------|---|
| ● GAS SHUT-OFF             | ▲ PUBLIC ACCESS GATE                    |
| ● WATER SHUT-OFF           | ▲ FIRE ACCESS GATE                      |
| ● ELECTRICAL MAIN SHUT-OFF | ⊕ FIRST AID KIT LOCATION                |
| ○ ELECTRICAL SHUT-OFF      | ⊕ EMERGENCY DRINKING WATER LOCATION     |
| ● FIRE HYDRANT             | ○ EMERGENCY CONTAINER (BARREL) LOCATION |



School <b>HEDRICK ELEMENTARY SCHOOL</b>	<b>550 SOUTH WATERMAN AVENUE EL CENTRO, CA. 92243 TELEPHONE - 352 9811</b>	Scale 1" = 125'	Date 03-11-09
--	--	--------------------	------------------

LABRUCHERIE ROAD



**BUILDING IDENTIFICATION  
ICOE**

① MODULAR BUILDING

**KING ELEMENTARY**

- (A) ENTRANCE A,  
OFFICE &  
KINDERGARTEN
- (B) ENTRANCE B,  
ROOMS 3 - 11
- (C) ENTRANCE C,  
ROOMS 12 - 20
- (D) ENTRANCE C,  
ROOMS 21, 22 &  
MULTIPURPOSE

**LEGEND**

- GAS SHUT-OFF
- WATER SHUT-OFF
- ELECTRICAL MAIN SHUT-OFF
- ELECTRICAL SHUT-OFF
- FIRE HYDRANT
- ▲ PUBLIC ACCESS GATE
- ▲ FIRE ACCESS GATE
- ✚ FIRST AID KIT LOCATION
- ✚ EMERGENCY DRINKING WATER LOCATION
- EMERGENCY CONTAINER (BARREL) LOCATION

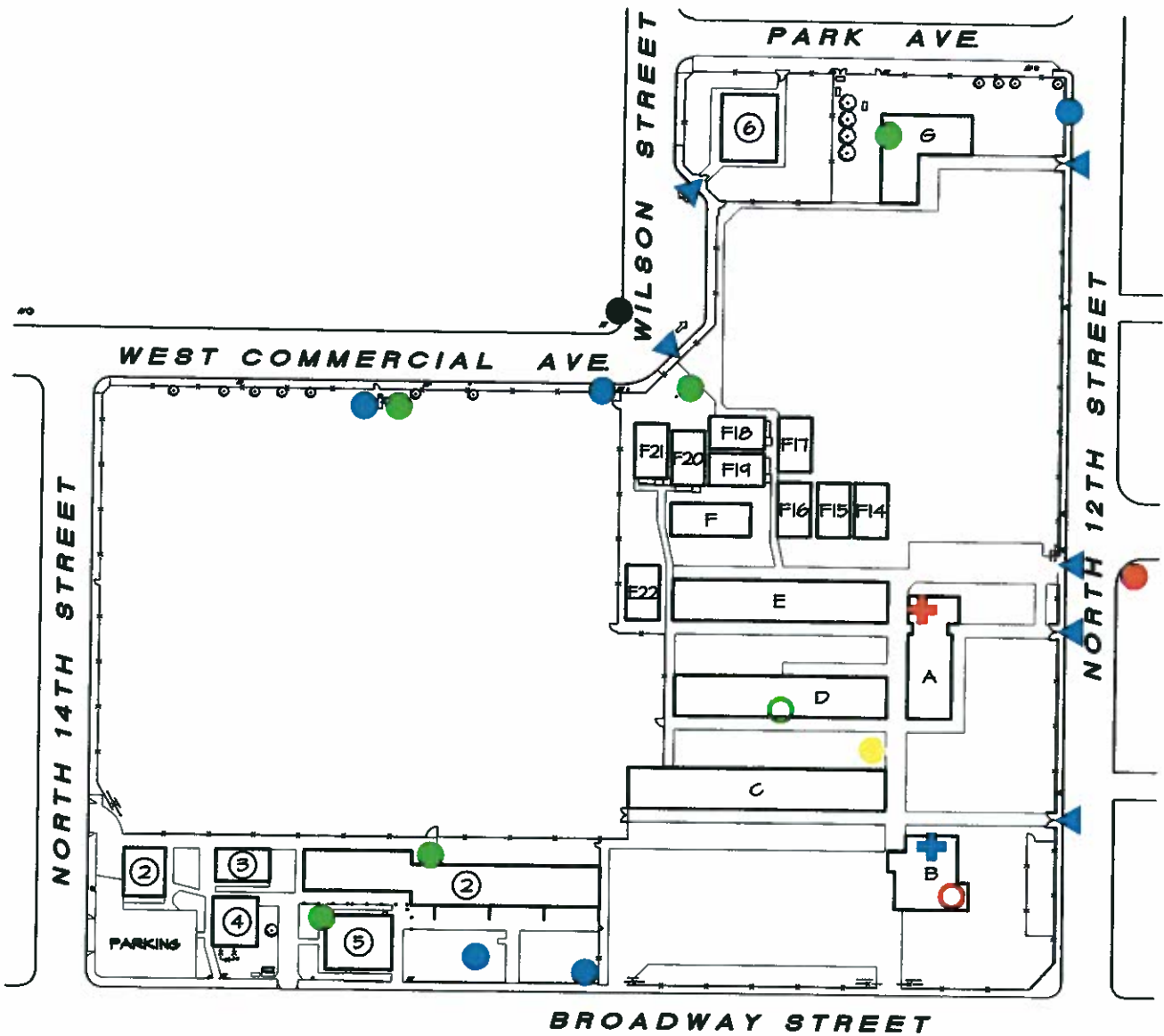


School  
**KING  
ELEMENTARY SCHOOL**

**1950 VILLA AVENUE  
EL CENTRO, CA. 92243  
TELEPHONE - 352-6555**

Scale  
1" = 125'

Date  
03-11-09



**BUILDING IDENTIFICATION**

**LINCOLN ELEMENTARY SCHOOL**

- A ADMINISTRATION / CLASSROOM
- B MULTIPURPOSE
- C CLASSROOMS
- D CLASSROOMS
- E CLASSROOMS
- E22 RELOCATABLE CLASSROOM
- F RELOCATABLE LIBRARY
- F14 RELOCATABLE CLASSROOM
- > THROUGH
- F21 RELOCATABLE CLASSROOM
- G KINDERGARTEN

**ICOE**

- ⑥ HEAD START

**DISTRICT OFFICES**

- ① E.C.E.S.D. ADMINISTRATION
- ② HEALTH SERVICES MODULAR
- ③ ADMINISTRATION RELOCATABLE
- ④ SPECIAL EDUCATION ADMINISTRATION
- ⑤ SUPERINTENDENTS OFFICE

**LEGEND**

- GAS SHUT-OFF
- WATER SHUT-OFF
- ELECTRICAL MAIN SHUT-OFF
- ELECTRICAL SHUT-OFF
- FIRE HYDRANT
- ▲ PUBLIC ACCESS GATE
- ▲ FIRE ACCESS GATE
- ⊕ FIRST AID KIT LOCATION
- ⊕ EMERGENCY DRINKING WATER LOCATION
- EMERGENCY CONTAINER (BARREL) LOCATION



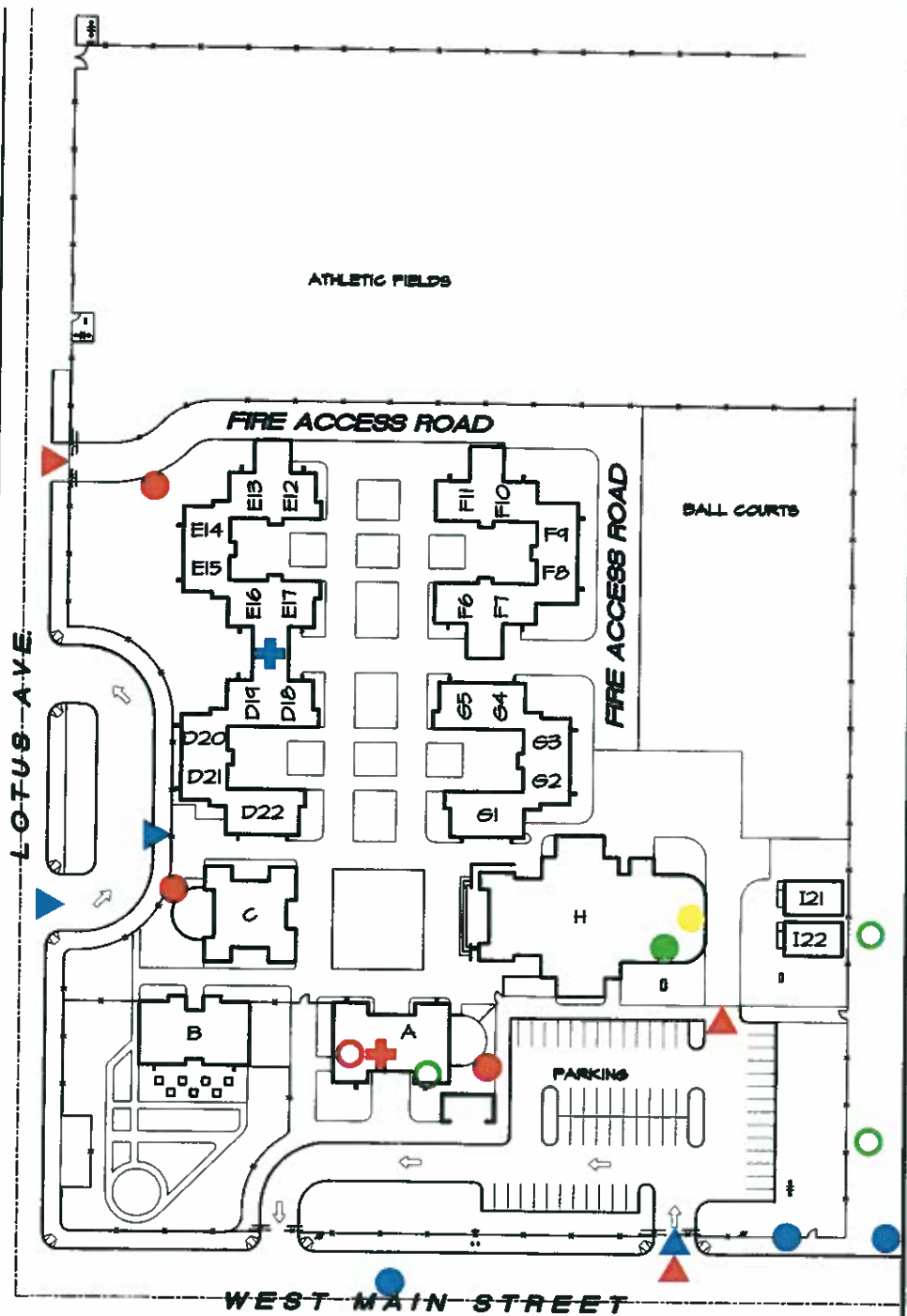
School <b>LINCOLN ELEMENTARY SCHOOL</b> AND DISTRICT OFFICE (CO-Locations)	<b>200 NORTH 12th STREET</b> <b>EL CENTRO, CA. 92243</b> <b>TELEPHONE - 352-3060</b>	Scale 1"=125'	Date 03-11-09
--	--	------------------	------------------

**BUILDING IDENTIFICATION  
SUNFLOWER ELEMENTARY**

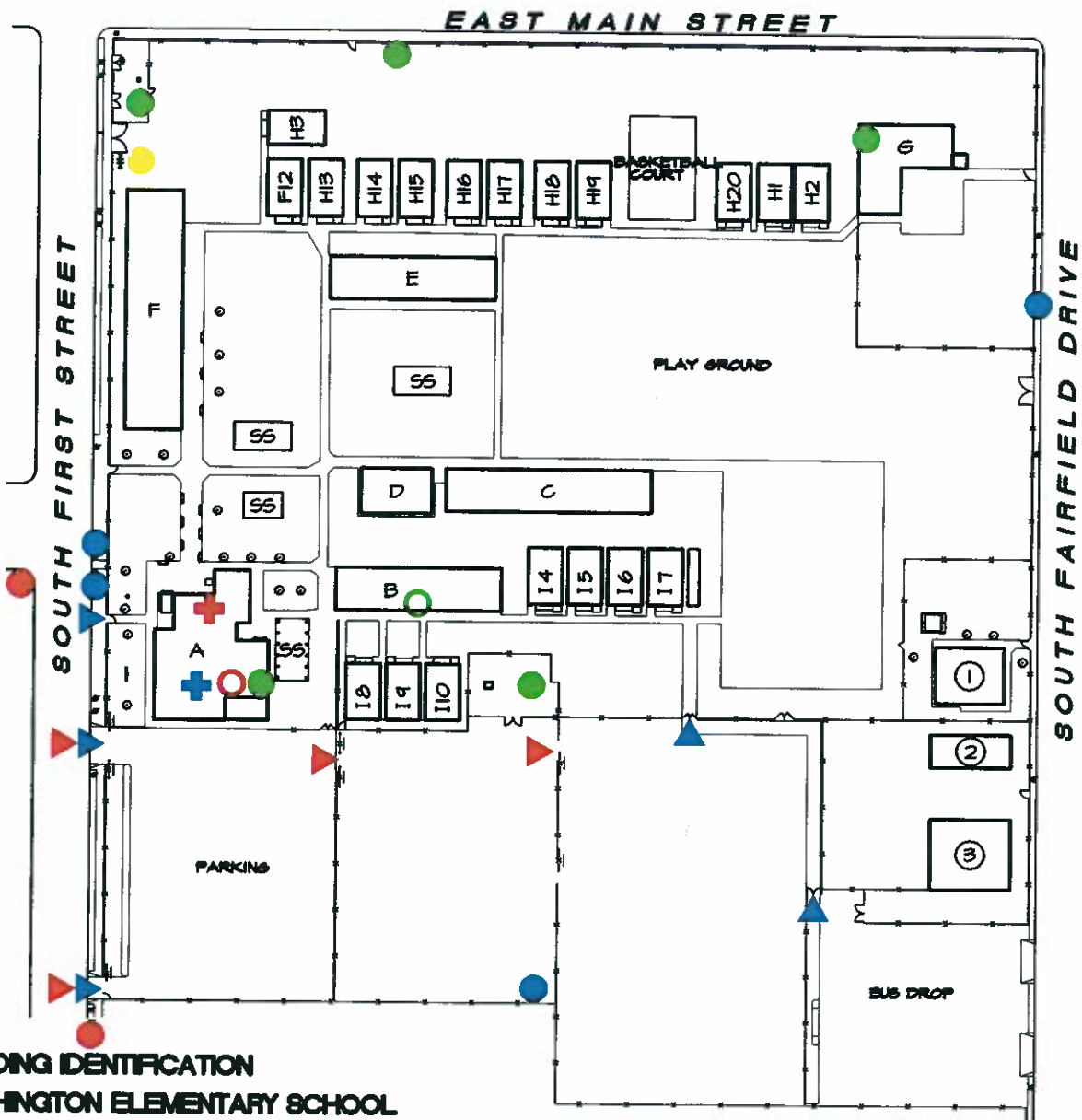
- A ADMINISTRATION
- B KINDER - ROOMS A / B
- C LIBRARY / COMPUTER LAB
- D CLASSROOMS
- E CLASSROOMS
- F CLASSROOMS
- G CLASSROOMS
- H MULTIPURPOSE
- I21 RELOCATABLE CLASSROOM
- I22 RELOCATABLE CLASSROOM

**LEGEND**

- GAS SHUT-OFF
- WATER SHUT-OFF
- ELECTRICAL MAIN SHUT-OFF
- ELECTRICAL SHUT-OFF
- FIRE HYDRANT
- ▲ PUBLIC ACCESS GATE
- ▲ FIRE ACCESS GATE
- + FIRST AID KIT LOCATION
- + EMERGENCY DRINKING WATER LOCATION
- EMERGENCY CONTAINER (BARREL) LOCATION



School <b>SUNFLOWER ELEMENTARY SCHOOL</b>	<b>2450 MAIN STREET EL CENTRO, CA. 92243 TELEPHONE - 337-4890</b>	Scale <b>1" = 125'</b>	Date <b>03-11-09</b>
--	---	---------------------------	-------------------------



**BUILDING IDENTIFICATION  
WASHINGTON ELEMENTARY SCHOOL**

- |                                 |                           |                           |
|---------------------------------|---------------------------|---------------------------|
| A ADMINISTRATION / MULTIPURPOSE | 6 KINDERGARTEN            | 14 RELOCATABLE CLASSROOM  |
| B CLASSROOMS                    | H1 RELOCATABLE CLASSROOM  | > THROUGH                 |
| C CLASSROOMS                    | > THROUGH                 | 110 RELOCATABLE CLASSROOM |
| D MODULAR LIBRARY               | H8 RELOCATABLE CLASSROOM  | 55 SHADE STRUCTURE        |
| E CLASSROOMS                    | H12 RELOCATABLE CLASSROOM |                           |
| F MODULAR CLASSROOMS            | > THROUGH                 |                           |
|                                 | H20 RELOCATABLE CLASSROOM |                           |

**LEGEND**

- |                            |   |
|----------------------------|---|
| ● GAS SHUT-OFF             | ▲ PUBLIC ACCESS GATE                    |
| ● WATER SHUT-OFF           | ▲ FIRE ACCESS GATE                      |
| ● ELECTRICAL MAIN SHUT-OFF | ⊕ FIRST AID KIT LOCATION                |
| ○ ELECTRICAL SHUT-OFF      | ⊕ EMERGENCY DRINKING WATER LOCATION     |
| ● FIRE HYDRANT             | ○ EMERGENCY CONTAINER (BARREL) LOCATION |

**KOE**

- |                     |
|---------------------|
| ① CHILD DEVELOPMENT |
| ② HEAD START        |
| ③ HEAD START        |



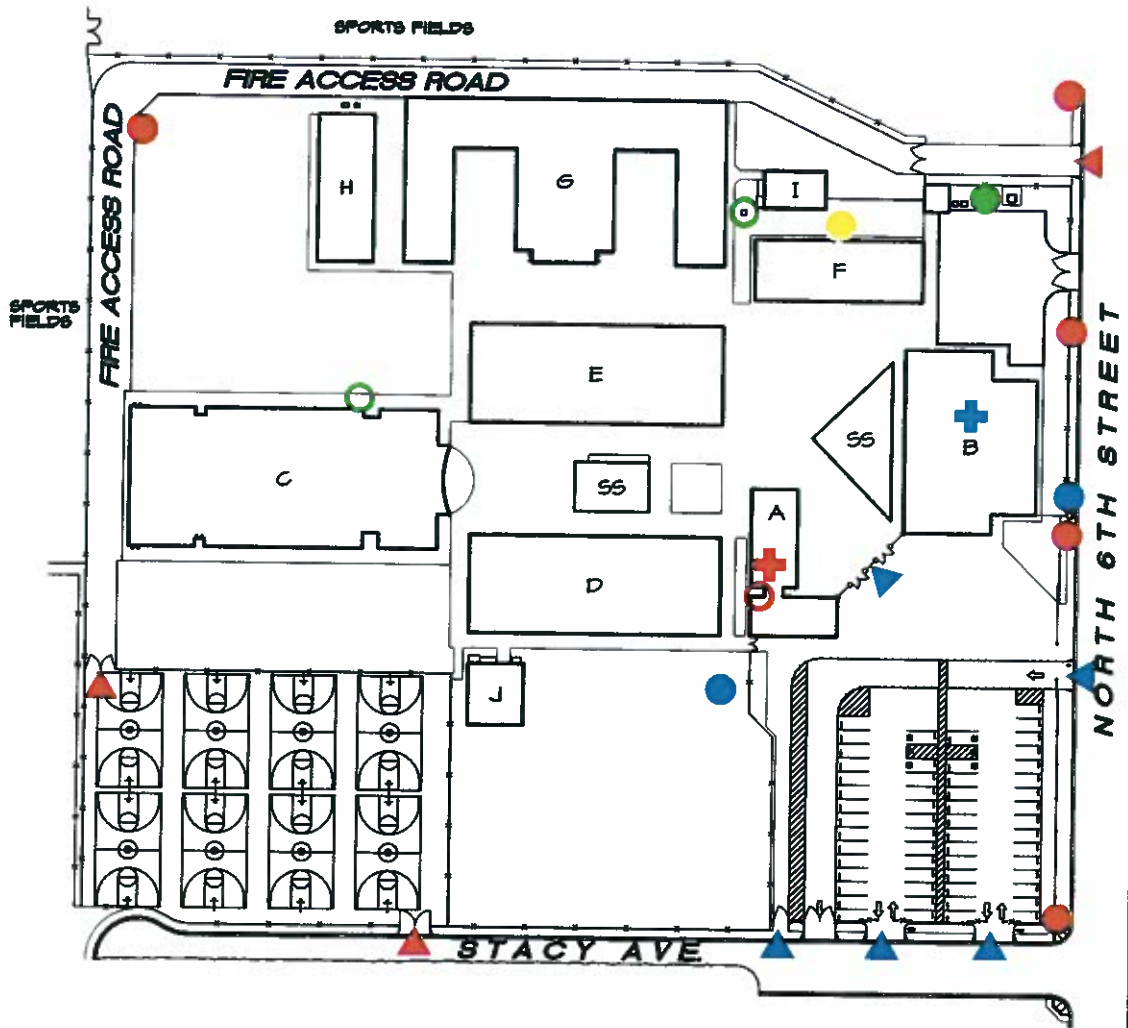
School  
**WASHINGTON  
ELEMENTARY SCHOOL**

**223 SOUTH FIRST STREET  
EL CENTRO, CA. 92243  
TELEPHONE - 352-6611**

Scale  
1" = 125'

Date  
03-17-09





**BUILDING IDENTIFICATION  
KENNEDY MIDDLE SCHOOL**

- |                  |                               |                    |
|------------------|-------------------------------|--------------------|
| A ADMINISTRATION | F COMPUTER LAB / LIBRARY      | SS SHADE STRUCTURE |
| B MULTIPURPOSE   | G CLASSROOMS                  |                    |
| C GYMNASIUM      | H ICOE SPECIAL EDUCATION      |                    |
| D CLASSROOMS     | I ICOE SPECIAL EDUCATION      |                    |
| E CLASSROOMS     | J MUSIC RELOCATABLE CLASSROOM |                    |

**LEGEND**

- |                            |   |
|----------------------------|---|
| ● GAS SHUT-OFF             | ▲ PUBLIC ACCESS GATE                    |
| ● WATER SHUT-OFF           | ▲ FIRE ACCESS GATE                      |
| ● ELECTRICAL MAIN SHUT-OFF | ⊕ FIRST AID KIT LOCATION                |
| ○ ELECTRICAL SHUT-OFF      | ⊕ EMERGENCY DRINKING WATER LOCATION     |
| ● FIRE HYDRANT             | ○ EMERGENCY CONTAINER (BARREL) LOCATION |



School  
**KENNEDY  
MIDDLE SCHOOL**

**900 NORTH SIXTH STREET  
EL CENTRO, CA. 92243  
TELEPHONE - 352-0444**

Scale  
**1" = 125'**

Date  
**03-11-09**

Wilson Jr. High School  
600 South Wilson Street

352-5341 - telephone

Emergency Plan Map  
Utilities

AUG 07 2007

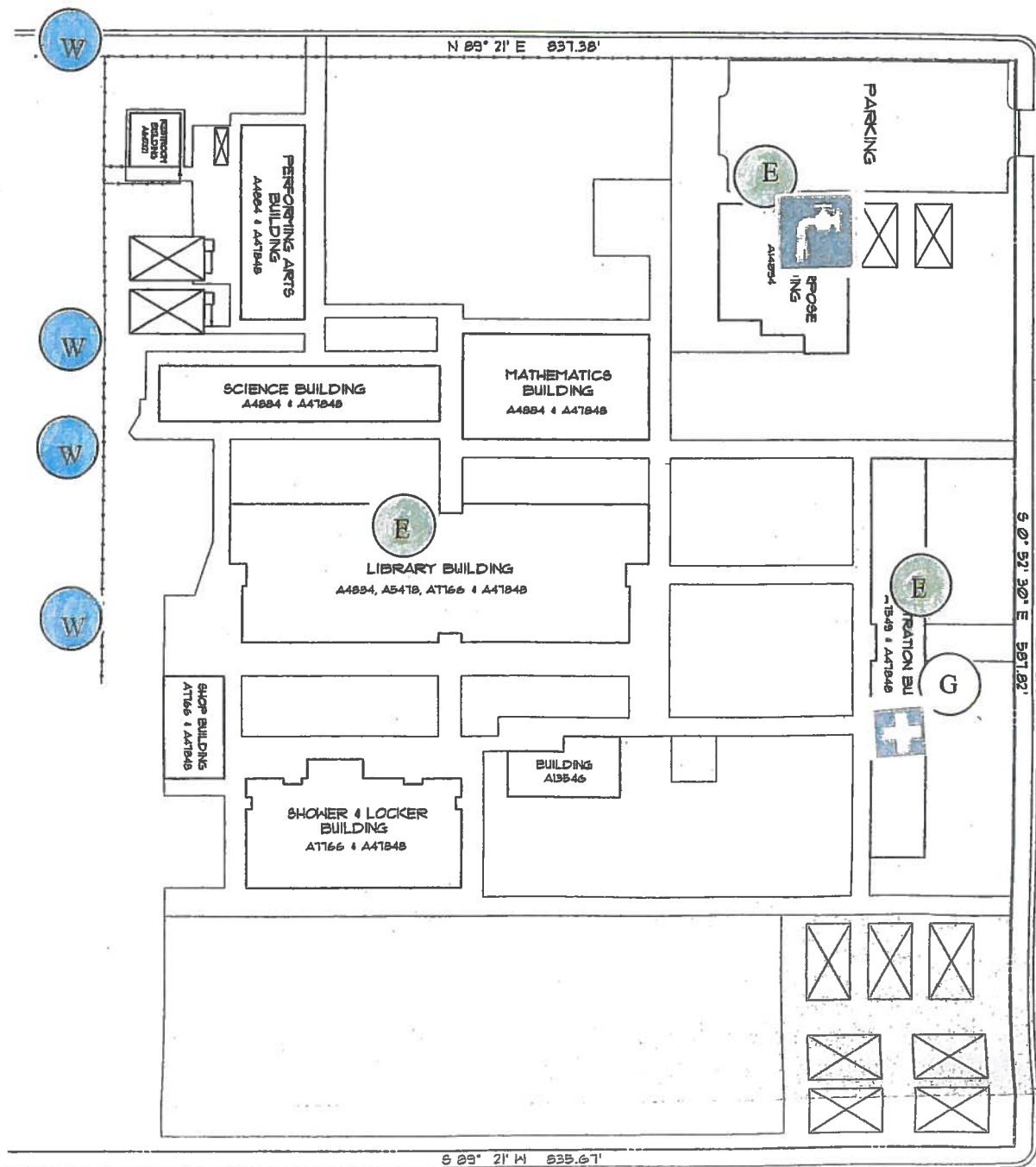
- Gas Shut-off
- Water Shut-off
- Electrical Panel



Emergency drinking water location



First aid kit location



Wilson Jr. High School  
600 South Wilson Street

352-5341 - telephone

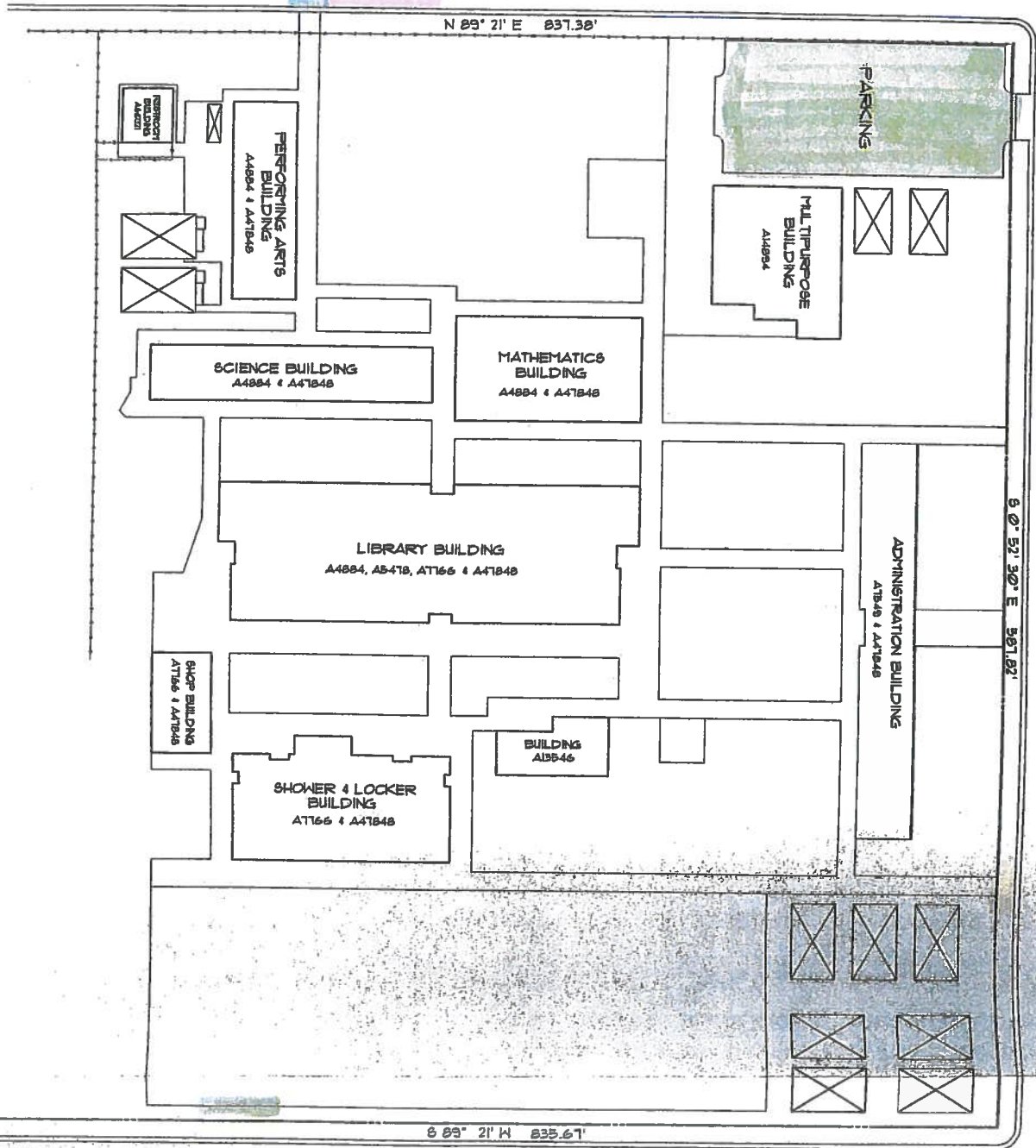
AUG 07 2007

Emergency Plan Map  
Students/Staff

Holt Avenue

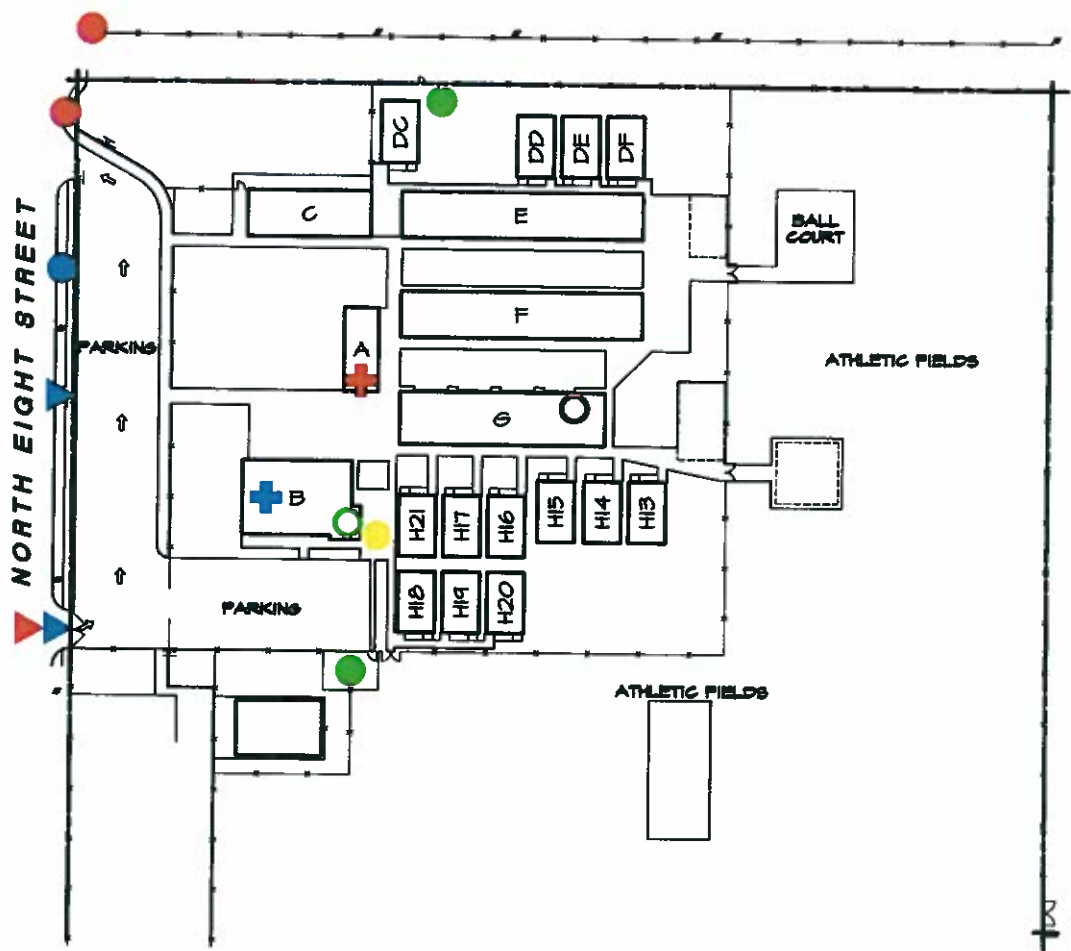
SITE PLAN / WILSON JUNIOR HIGH SCHOOL

SCALE: 1" = 60'-0"



- Gates that will be open for student entrance
- Parking area for staff/substitute teachers
- Bus drop-off and pick-up area

Holt Avenue



**BUILDING IDENTIFICATION**

**McKINLEY ELEMENTARY SCHOOL**

- |                          |                          |                           |
|--------------------------|--------------------------|---------------------------|
| A ADMINISTRATION         | DE RELOCATABLE CLASSROOM | H13 RELOCATABLE CLASSROOM |
| B MULTIPURPOSE           | DF RELOCATABLE CLASSROOM | > THROUGH                 |
| C KINDERGARTEN           | E CLASSROOMS             | H21 RELOCATABLE CLASSROOM |
| DC RELOCATABLE CLASSROOM | F CLASSROOMS             |                           |
| DD RELOCATABLE CLASSROOM | G CLASSROOMS             |                           |

**LEGEND**

- |                            |   |
|----------------------------|---|
| ● GAS SHUT-OFF             | ▲ PUBLIC ACCESS GATE                    |
| ● WATER SHUT-OFF           | ▲ FIRE ACCESS GATE                      |
| ● ELECTRICAL MAIN SHUT-OFF | ⊕ FIRST AID KIT LOCATION                |
| ○ ELECTRICAL SHUT-OFF      | ⊕ EMERGENCY DRINKING WATER LOCATION     |
| ● FIRE HYDRANT             | ○ EMERGENCY CONTAINER (BARREL) LOCATION |



School <b>McKINLEY ELEMENTARY SCHOOL</b>	<b>1177 NORTH 12th STREET EL CENTRO, CA. 92243 TELEPHONE - 352 3225</b>	Scale 1" = 125'	Date 03-11-09
---	---	--------------------	------------------